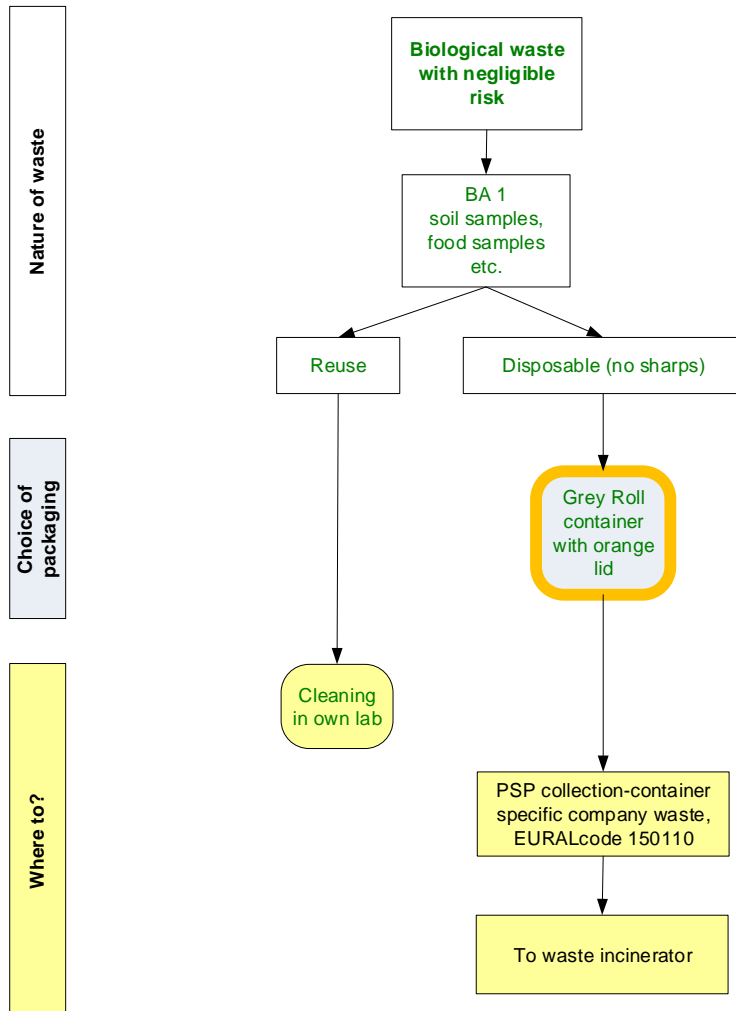


**Appendix 1: Explanation and flow chart of Biological waste with negligible risk
Biological agents level 1 (BA1), soil samples, food samples etc.**



Waste with negligible risk

The addition of 'negligible risk' means that:

- There are no BAs present with pathogenic capacity, and
- There are no GMOs (environmental risk) present in the waste, and
- There is no environmental risk (due to chemical substances) present in the waste.

The potential biological risk is therefore negligible. Handling this type of waste requires normal hygienic handling of materials. For example, the content of this waste concerns:

- Materials with BA belonging to category 1.
- Materials that have been applied/used in activities where no BA and/or GMO were present.
- Soil samples (note: soil samples with serious chemical contamination are disposed of differently, see [KAM rule 07 Disposal of \(hazardous\) waste](#)).
- Food products from the (super)market.

Sharp objects with negligible risk

Sharp objects (such as needles and scalpels) with a negligible risk, always present a risk of puncture/cutting accidents. For that reason, they are collected separately in an appropriate collection container (needle container, Sharps container, see appendix 7 Explanation types of waste containers).

Broken glass (not in the flow chart)

Broken laboratory glass with negligible risk: keep it separate and register with Selfservice or PSP Logistics centre. PSP will collect this material separately as glass collection. PSP can determine whether the glass waste provided is suitable for recycling and as such monitors the quality of the glass for the waste processor. This glass waste does NOT refer to the packaging of chemicals, please see [KAM rule 07 Disposal of \(hazardous\) waste](#) for this.

For household glass waste see [KAM rule 07 Disposal of \(hazardous\) waste](#) or your own organisation's procedures with regard to glassware.

Reuse of materials with negligible risk

Materials for reuse that may contain biological waste with negligible risk, may be rinsed and cleaned after use, depending on application requirements. There are no separate instructions relating to this as there is no potential risk. Cleaning takes place in the organisation's own laboratory.

Disposables with negligible risk

Disposable materials with biological waste with negligible risk are collected through the PSP Logistics centre and must comply with:

- The waste has no sharp tips or corners (pipette tips, ELISA-plates) whereby bags are easily torn during handling and/or transport.
- Package the waste in refuse bags and gather them in the designated grey klike/roll container with orange lid (special [container refuse bags](#) are available from PSP).
- Limit the amount of moisture in this waste, make sure there is sufficient absorbent material (tissues) to prevent leakage from the waste bags.
- Waste originating from shellfish, where it has been demonstrated in advance that it is clean, package as described above. Ensure that this waste is disposed of immediately due to bad smell.
- The content from the roll containers is collected by PSP in a collection container at the Logistics centre as special industrial waste.